

Name: _____

Date: _____

Word Match Quiz for Category: nouns_proper

Fill each blank with the matching word that corresponds to it from up top.

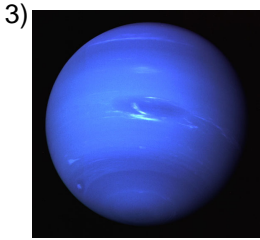
Words to Match: Países Bajos - Noruega - el Támesis - María Isabel - Bélgica - Washington - Rosario - Argentina - las pasas de Corinto - Neptuno - María Jesús - Venus - Varsovia - Tailandia - Saturno - María Teresa - Rosa - Pedro - el Sena - Chile - Francisco - Rafael - el Tajo - Dolores - España - Carlos - Jesús - Nueva Zelanda - Marte - Gales - Europa - José



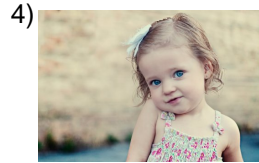
María Isabel



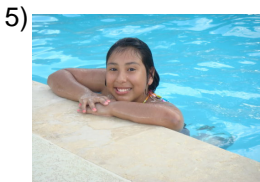
Belgium



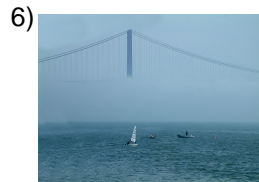
Neptune



Rosario



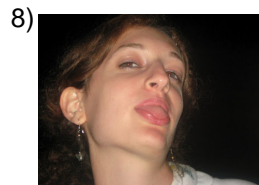
María Jesús



River Tagus



Chile



Rosa

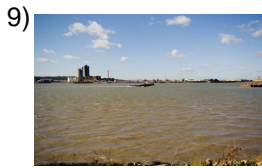
Name: _____

Date: _____

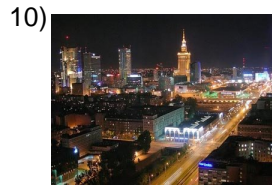
(continued) Word Match Quiz for Category: nouns_proper

Fill each blank with the matching word that corresponds to it from up top.

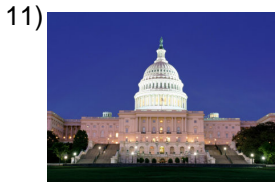
Words to Match: Países Bajos - Noruega - el Támesis - María Isabel - Bélgica - Washington - Rosario - Argentina - las pasas de Corinto - Neptuno - María Jesús - Venus - Varsovia - Tailandia - Saturno - María Teresa - Rosa - Pedro - el Sena - Chile - Francisco - Rafael - el Tajo - Dolores - España - Carlos - Jesús - Nueva Zelanda - Marte - Gales - Europa - José



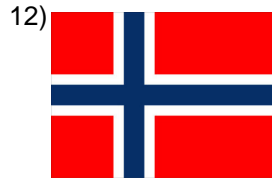
River Thames



Warsaw



Washington



Norway



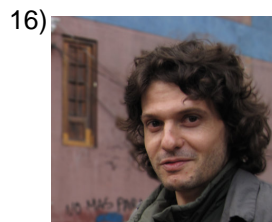
Rafael



Dolores



Thailand



Pedro

Name: _____

Date: _____

(continued) Word Match Quiz for Category: nouns_proper

Fill each blank with the matching word that corresponds to it from up top.

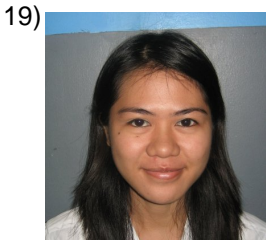
Words to Match: Países Bajos - Noruega - el Támesis - María Isabel - Bélgica - Washington - Rosario - Argentina - las pasas de Corinto - Neptuno - María Jesús - Venus - Varsovia - Tailandia - Saturno - María Teresa - Rosa - Pedro - el Sena - Chile - Francisco - Rafael - el Tajo - Dolores - España - Carlos - Jesús - Nueva Zelanda - Marte - Gales - Europa - José



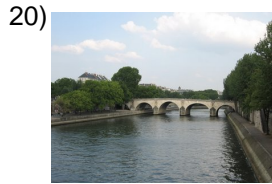
Netherlands



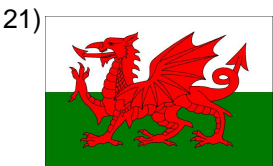
currants



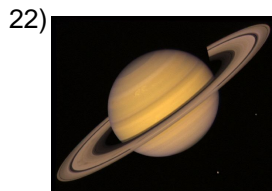
María Teresa



River Seine



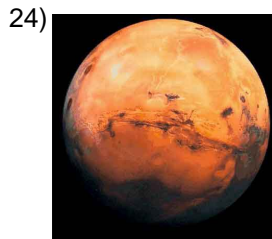
Wales



Saturn



Jesús



Mars

Name: _____

Date: _____

(continued) Word Match Quiz for Category: nouns_proper

Fill each blank with the matching word that corresponds to it from up top.

Words to Match: Países Bajos - Noruega - el Támesis - María Isabel - Bélgica - Washington - Rosario - Argentina - las pasas de Corinto - Neptuno - María Jesús - Venus - Varsovia - Tailandia - Saturno - María Teresa - Rosa - Pedro - el Sena - Chile - Francisco - Rafael - el Tajo - Dolores - España - Carlos - Jesús - Nueva Zelanda - Marte - Gales - Europa - José



Argentina



Venus



Francisco



Spain



Carlos



New Zealand



Europe



José

Name: _____

Date: _____

Answer Key for Worksheet 88b40

Word Match Quiz starting on page 1

1 = María Isabel , 2 = Bélgica , 3 = Neptuno , 4 = Rosario , 5 = María Jesús , 6 = el Tajo , 7 = Chile , 8 = Rosa , 9 = el Támesis , 10 = Varsovia , 11 = Washington , 12 = Noruega , 13 = Rafael , 14 = Dolores , 15 = Tailandia , 16 = Pedro , 17 = Países Bajos , 18 = las pasas de Corinto , 19 = María Teresa , 20 = el Sena , 21 = Gales , 22 = Saturno , 23 = Jesús , 24 = Marte , 25 = Argentina , 26 = Venus , 27 = Francisco , 28 = España , 29 = Carlos , 30 = Nueva Zelanda , 31 = Europa , 32 = José