

Name: _____

Date: _____

Word Match Quiz for Category: children_city_1

Fill each blank with the matching word that corresponds to it from up top.

Words to Match:

la floristería - los semáforos - la acerca - el centro comercial

1)



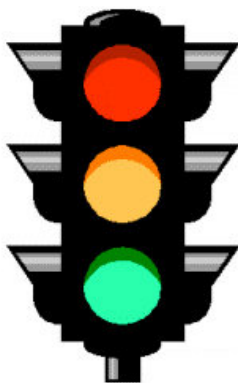
flower store

2)



sidewalk

3)



traffic lights

4)



shopping mall

(continued) Word Match Quiz for Category: children_city_1

Fill each blank with the matching word that corresponds to it from up top.

Words to Match:

el rascacielos - el zoológico - el hospital - la zapatería

5)



skyscraper

6)



hospital

7)



zoo

8)



shoe store

(continued) Word Match Quiz for Category: children_city_1

Fill each blank with the matching word that corresponds to it from up top.

Words to Match:

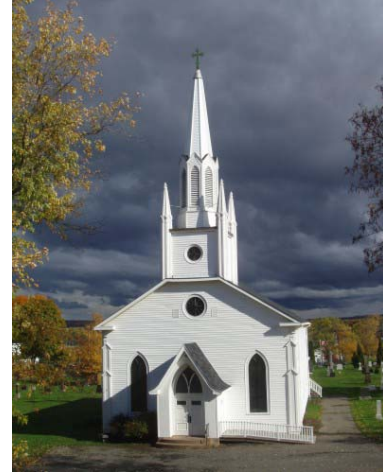
la panadería - la farmacia - la iglesia - la tienda

9)



bakery

10)



church

11)



pharmacy, drugstore

12)



store, shop

(continued) Word Match Quiz for Category: children_city_1

Fill each blank with the matching word that corresponds to it from up top.

Words to Match:

el estacionamiento - la avenida - el edificio - la librería

13)



parking lot

14)



avenue

15)



bookstore

16)



building

Name: _____

Date: _____

(continued) Word Match Quiz for Category: children_city_1

Fill each blank with the matching word that corresponds to it from up top.

Words to Match:

la estación del metro - el supermercado - el poste de luz - la biblioteca

17)



library

18)



streetlight

19)



supermarket

20)



subway station

Name: _____

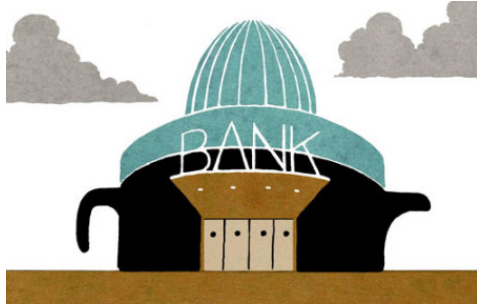
Date: _____

(continued) Word Match Quiz for Category: children_city_1

Fill each blank with the matching word that corresponds to it from up top.

Words to Match:
el banco - la ciudad

21)



bank

22)



city

Name: _____

Date: _____

Answer Key for Worksheet 1e9a7

Word Match Quiz starting on page 1

1 = la floristería , 2 = la acerca , 3 = los semáforos , 4 = el centro comercial , 5 = el rascacielos , 6 = el hospital , 7 = el zoológico , 8 = la zapatería , 9 = la panadería , 10 = la iglesia , 11 = la farmacia , 12 = la tienda , 13 = el estacionamiento , 14 = la avenida , 15 = la librería , 16 = el edificio , 17 = la biblioteca , 18 = el poste de luz , 19 = el supermercado , 20 = la estación del metro , 21 = el banco , 22 = la ciudad