

Name: _____

Date: _____

Word Match Quiz for Category: children_opposites

Fill each blank with the matching word that corresponds to it from up top.

Words to Match:
alto - vacío - flojo - lejos

1)



lazy, lazy person

2)



far

3)



tall (masculine singular)

4)



empty

(continued) Word Match Quiz for Category: children_opposites

Fill each blank with the matching word that corresponds to it from up top.

Words to Match:
difícil - bonito - sucio - caliente

5)



difficult

6)



cute, pretty

7)



dirty

8)



hot

Name: _____

Date: _____

(continued) Word Match Quiz for Category: children_opposites

Fill each blank with the matching word that corresponds to it from up top.

Words to Match:

largo - pocos - ligero - bella

9)



long

10)



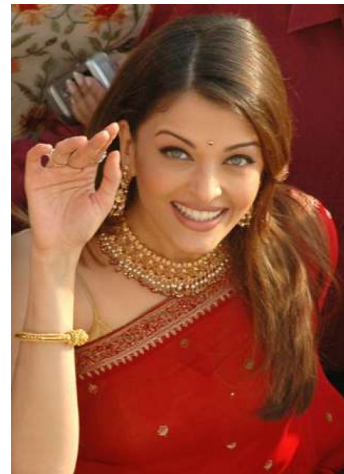
a few

11)



light weight

12)



beautiful

(continued) Word Match Quiz for Category: children_opposites

Fill each blank with the matching word that corresponds to it from up top.

Words to Match:
gordo - viejo - bonita - pequeño

13)



small

14)



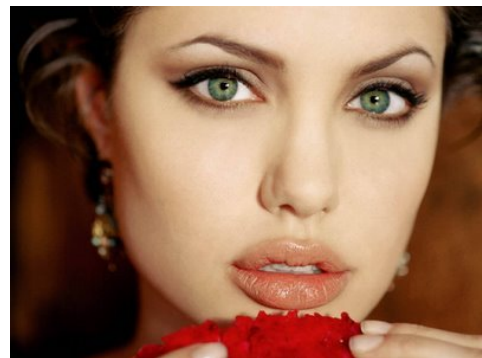
old

15)



husky

16)



pretty

(continued) Word Match Quiz for Category: children_opposites

Fill each blank with the matching word that corresponds to it from up top.

Words to Match:
triste - mucho - cerca - simpático

17)



sad

18)



much

19)



close

20)



pleasant, nice

Name: _____

Date: _____

(continued) Word Match Quiz for Category: children_opposites

Fill each blank with the matching word that corresponds to it from up top.

Words to Match:
nuevo - grande - mucho

21)



much, a lot

22)



big, large

23)



new

Name: _____

Date: _____

Answer Key for Worksheet f40eb

Word Match Quiz starting on page 1

1 = flojo , 2 = lejos , 3 = alto , 4 = vacío , 5 = difícil , 6 = bonito , 7 = sucio , 8 = caliente , 9 = largo , 10 = pocos , 11 = ligero , 12 = bella , 13 = pequeño , 14 = viejo , 15 = gordo , 16 = bonita , 17 = triste , 18 = mucho , 19 = cerca , 20 = simpático , 21 = mucho , 22 = grande , 23 = nuevo